

# EAS in 802.11

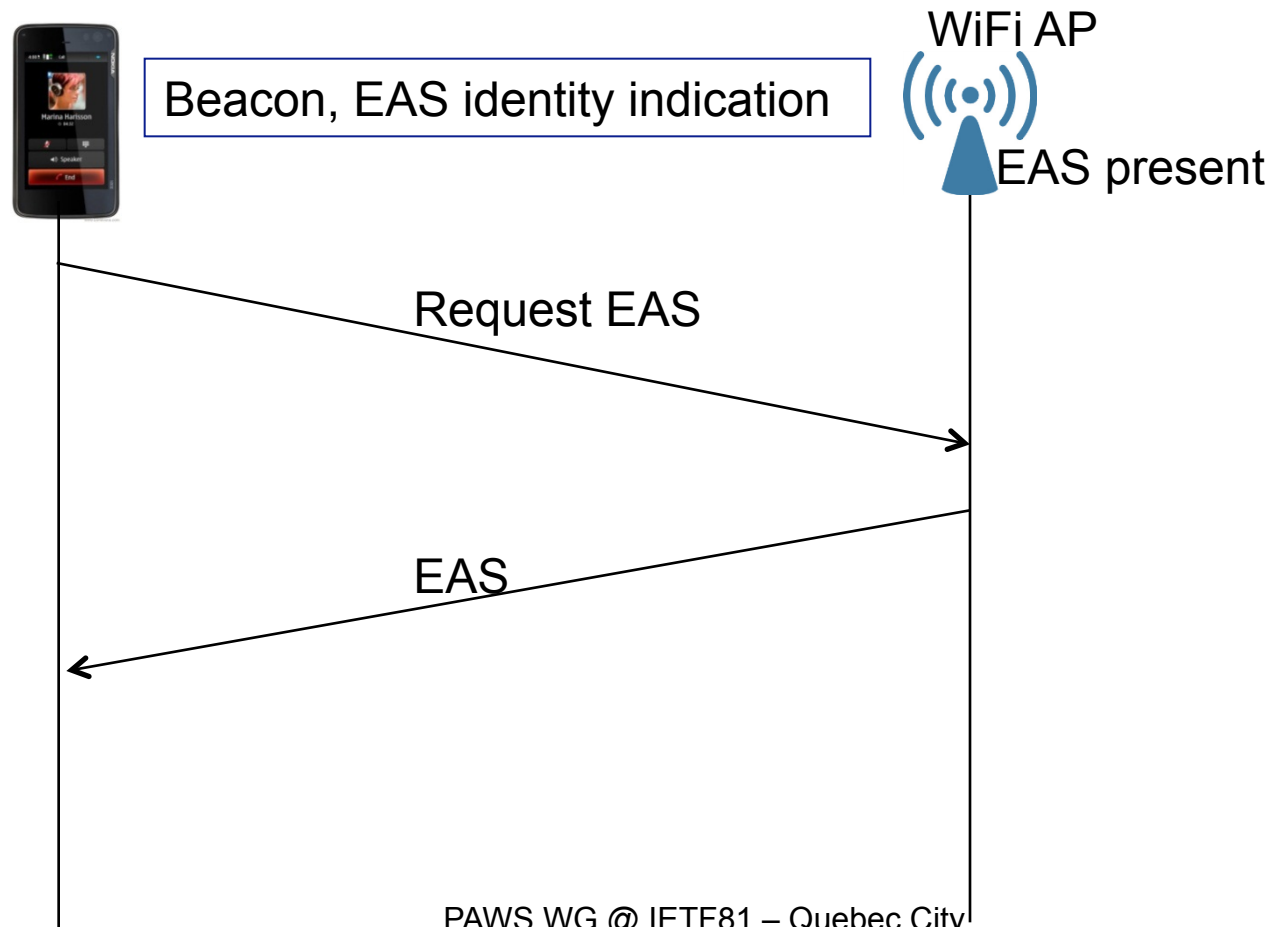
<http://www.ietf.org/id/draft-bajko-atoca-wlan-eas-01.txt>

**Gabor Bajko**

**IETF 82 Taipei**

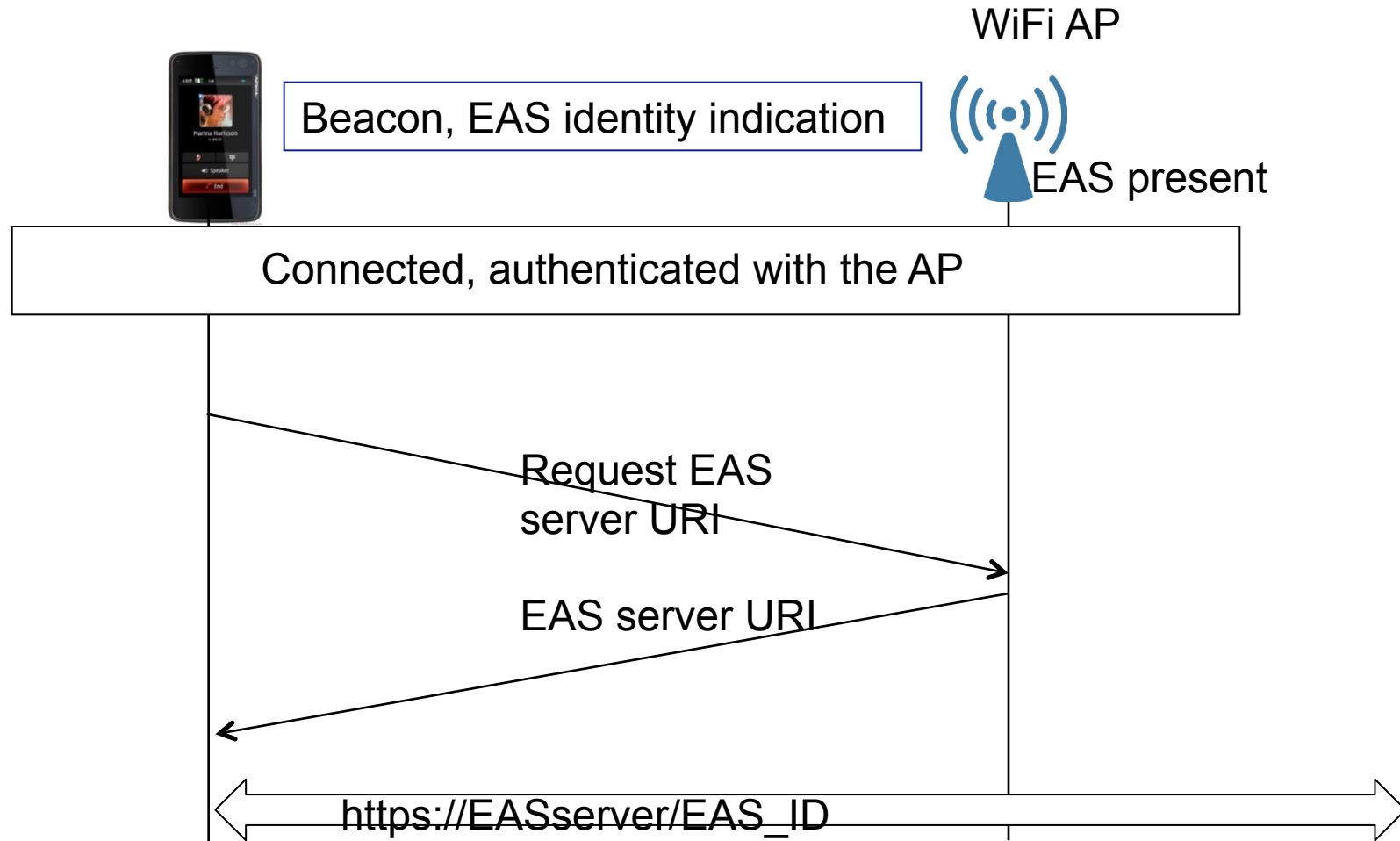
# EAS support in 802.11 - preauthentication

- Specifies the last mile delivery of an EAS to a wifi device
- No need to connect/authenticate a priori with the AP
- Trusting the EAS content is an issue



# EAS support in 802.11 - postauthentication

- Specifies the last mile delivery of an EAS to a wifi device



# Support for EAS in an AP

- Optional feature, AP may or may not support EAS
- Even if it supports it, the functionality has to be enabled
- The support and enablement of the feature is indicated on the radio i/f, but not to the WAN side
  - I.e., the AP would probably need to register/subscribe to a local/national EAS service for EAS to be sent to or be notified when to fetch them
- Functionality capable of handling multiple EAS messages
- There is no MIB variable defined to store EAS messages from the network
- WFA may help in integrating atoca with wifi EAS functionality