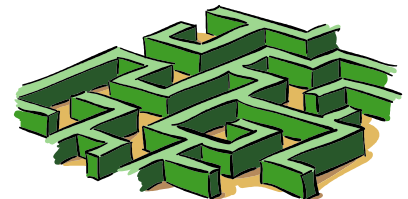


Dynamically Placed Pseudowires Using a Path Computation Element

Luca Martini.

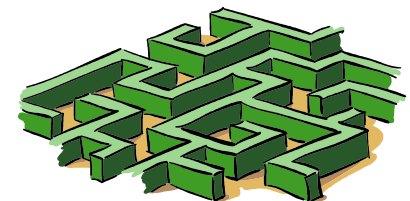
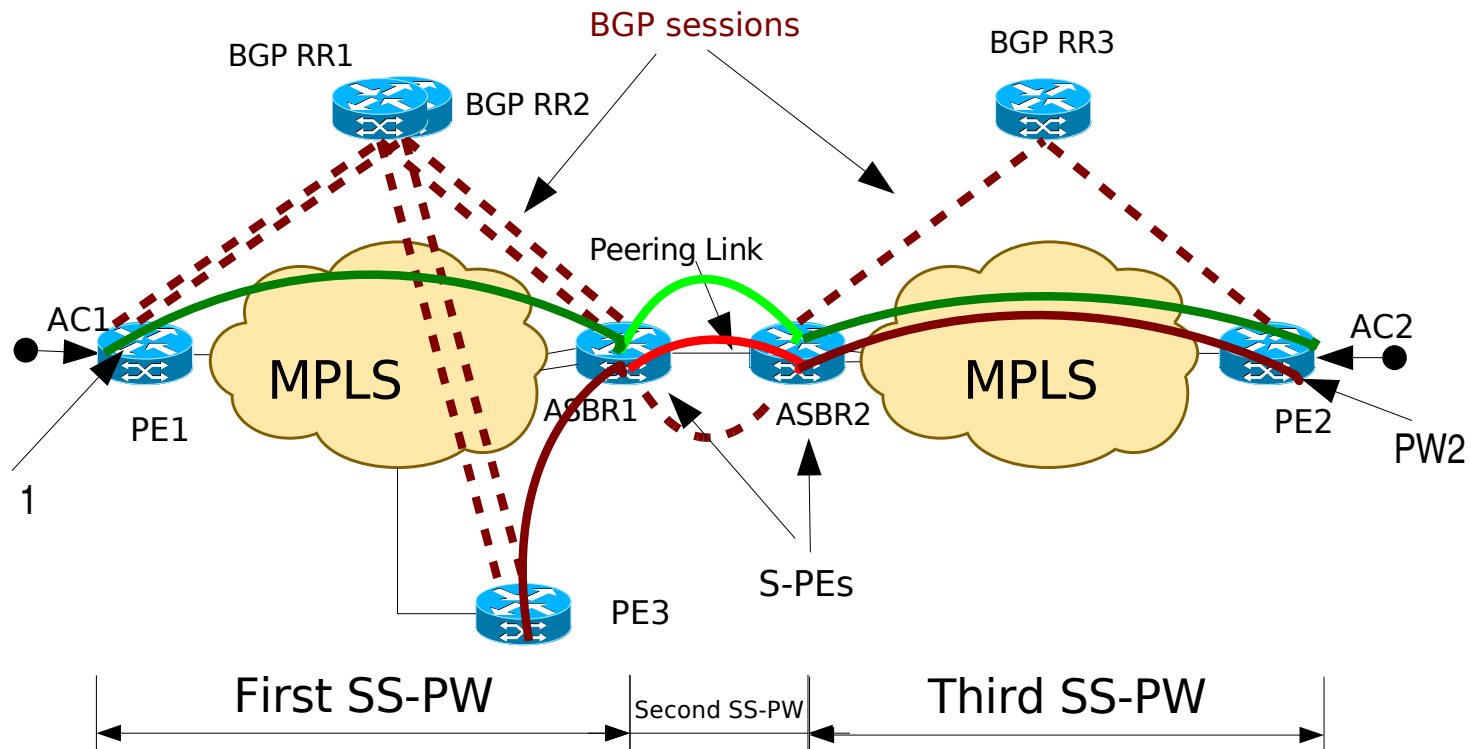
Tuesday, July 11, 2006

67th IETF San Diego

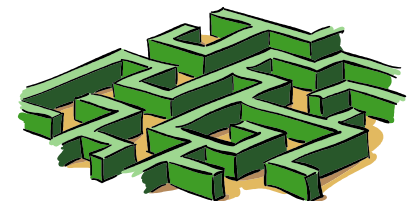
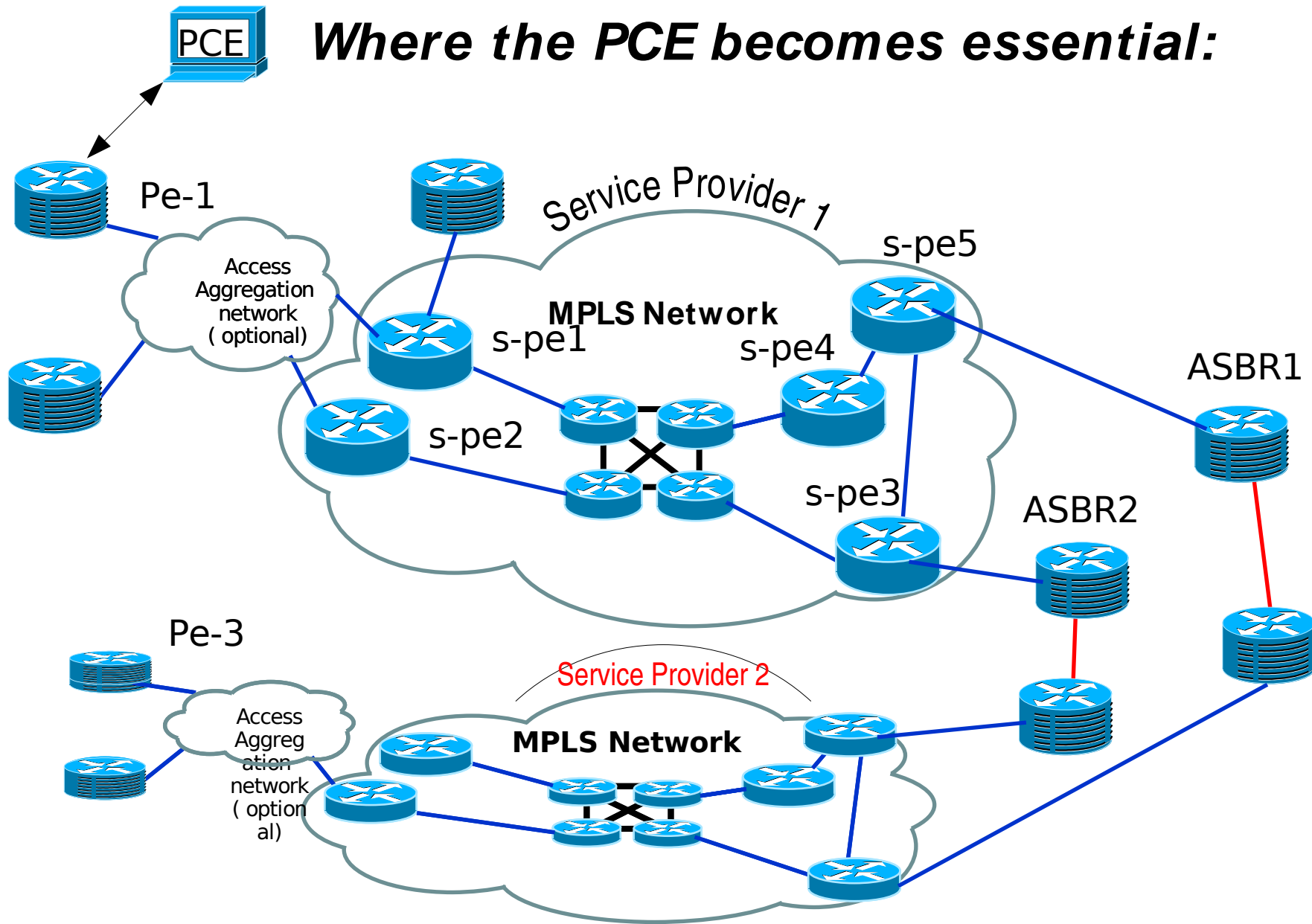


The Problem

- Simple Topology works well with only BGP.
- BGP provides a path.... Not necessarily the best path.

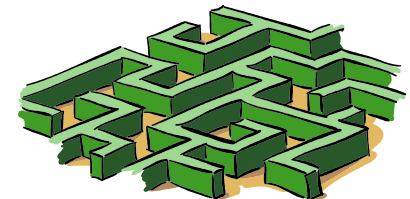
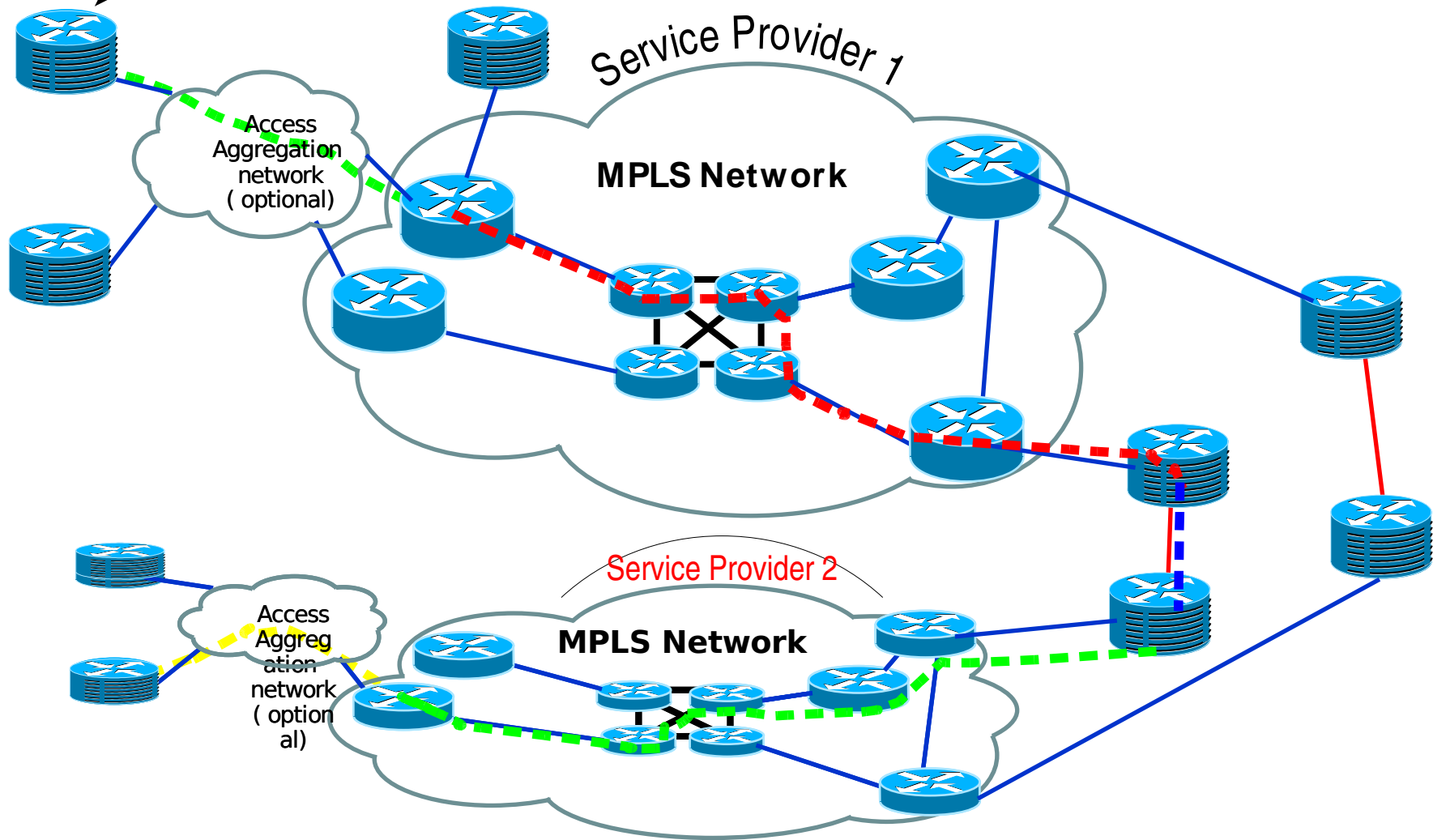


Where the PCE becomes essential:



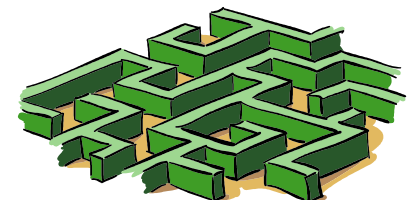


Where the PCE becomes essential:



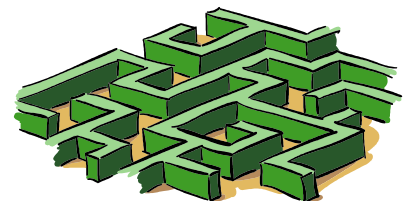
Topology Information

- ⇒ PCE needs topology information for PSN tunnels.
 - Not all possible tunnels might be available to A PW class.
 - PE/P routers do not need to have any S-PE <->S-PE topology information.
- ⇒ Solutions:
 - Carry S-PE topology information in the IGP (opaque LSA)
 - Direct communication between the PCE and the S-PE



Constraint Parameters

- ➔ What are the constraints to be used by the PCE for MS-PW placement ?
 - Bandwidth
 - Delay
 - Diversity



➡ Questions ?

Tuesday, July 11, 2006

67th IETF San Diego

