

The IETF62 Network

Jim Martin

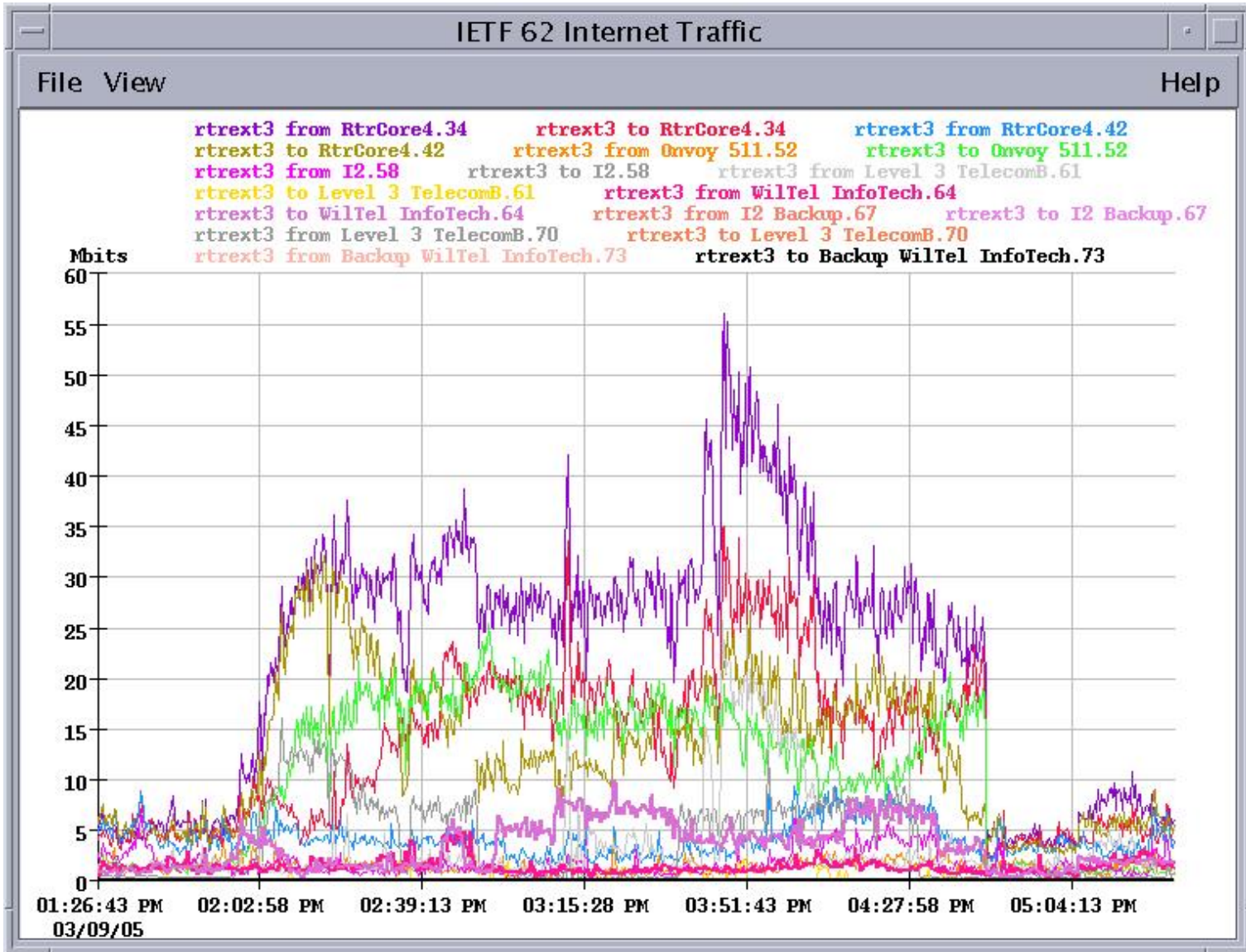
jim@daedelus.com

Yet another volunteer network

- No host found, so the IETF 62 network was built entirely by volunteers
- Circuits were in early, install went smoothly ... we shoulda known....
- Monday started poorly ... APs and controllers rebooting, bizarre forwarding issues
- Airespace came to the rescue, long hours of debugging, flew in a developer, rolled new code.
- Tuesday til now ... you tell us...

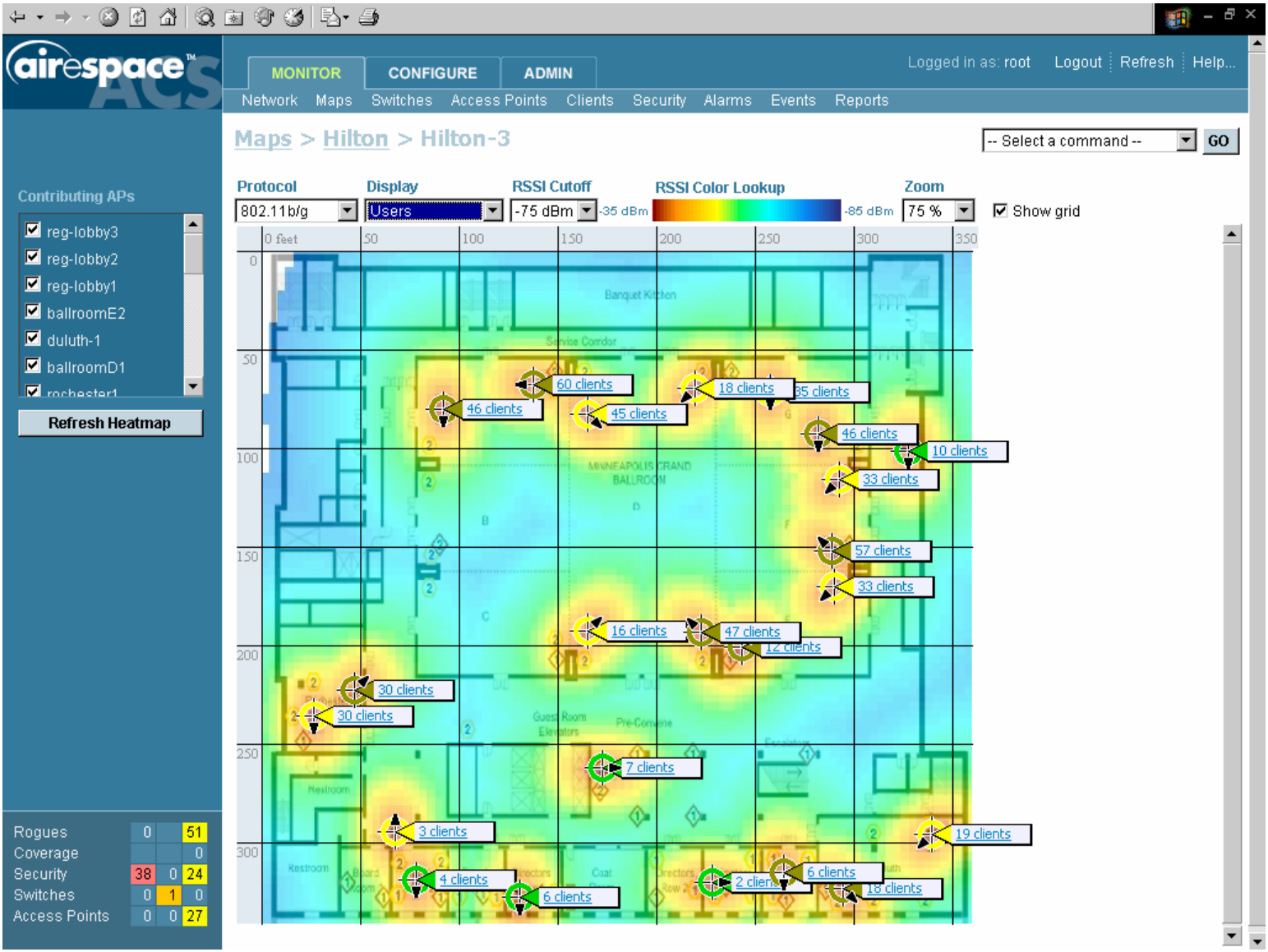
Internet Connectivity

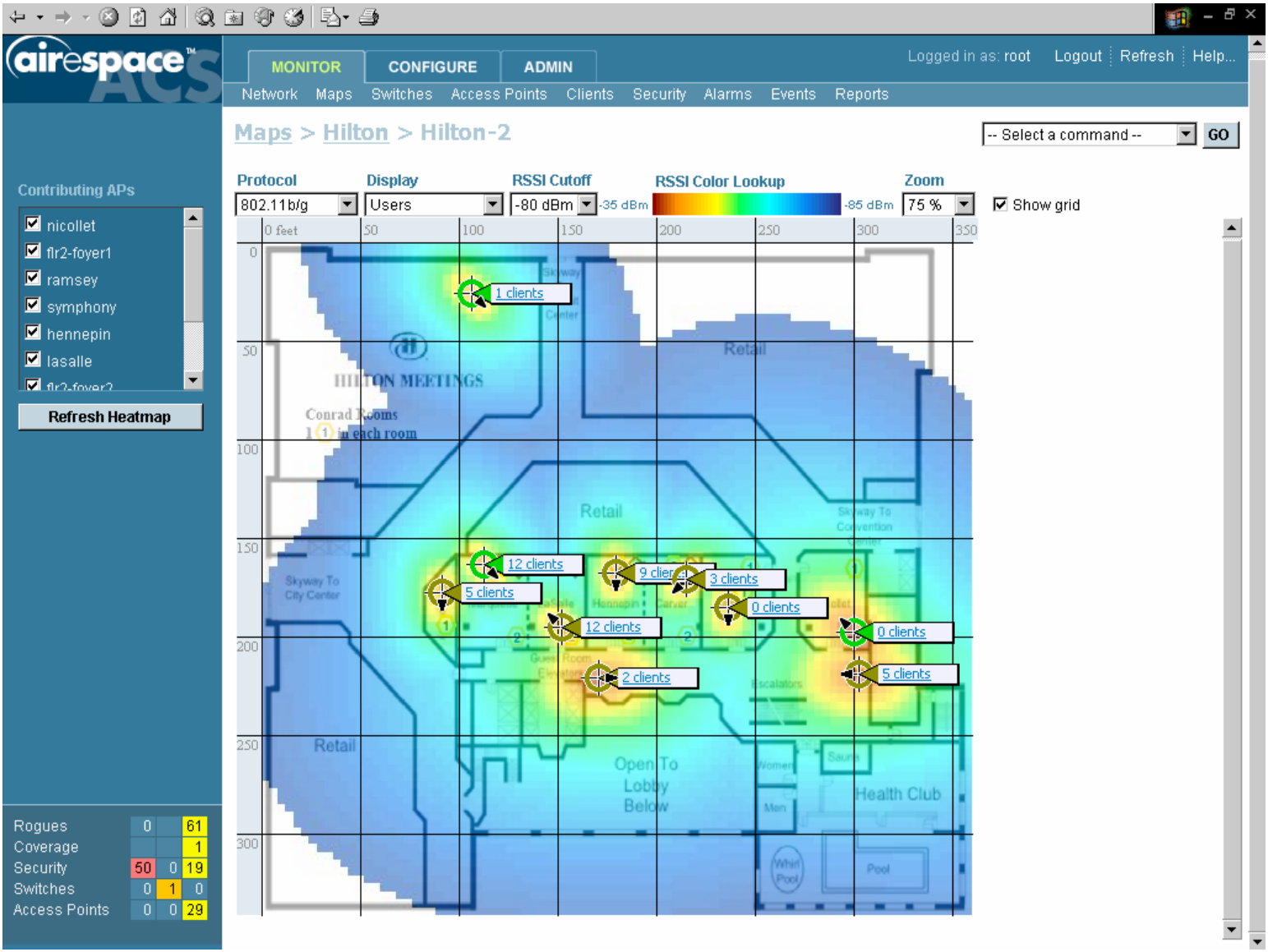
- Metro gigabit ethernet over dark fiber to Onvoy, Gigabit crossconnect from Onvoy to UMN
- 54M Wireless backup to UMN
- External routers from Juniper
 - two BGP peers at Onvoy
 - three at the UMN gigapop
 - Resulting in 944,954 possible paths for v4 unicast
- Peaks of ~325Mbps coming in, ~66Mbps out
- IPv6 and IPv4 multicast from Abilene via UMN



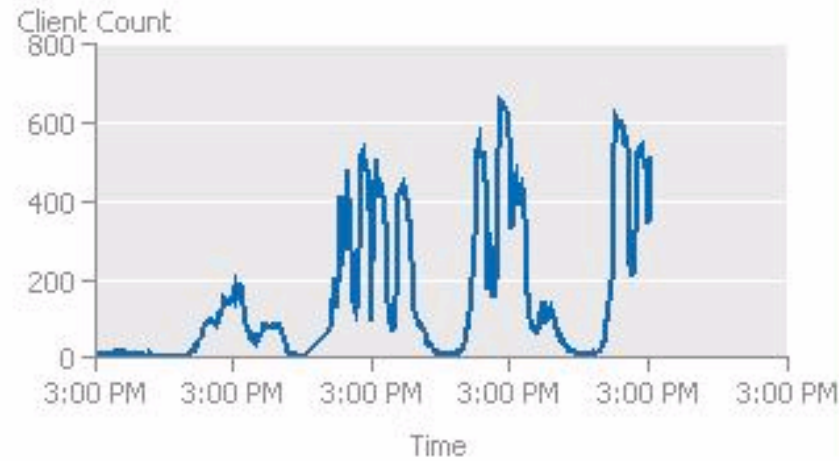
Wireless

- 38 802.11a/b/g Access Points and four Controllers from Airespace, spread through the 2nd and 3rd floors as well as the Lobby and Executive Lounge.
- Many of the APs and backup controllers contributed by Alcatel
- Peak simultaneous wireless users: 738
- 3 Wireless VLANs
 - Open (ietf62)
 - WEP (ietf62-wep)
 - 802.1X (ietf62-dot1x)

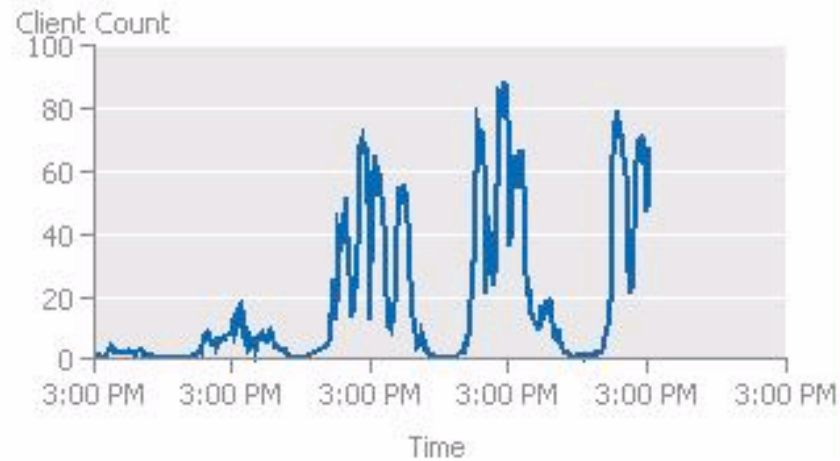




Associated 802.11b/g Clients for 'Entire Network'



Associated 802.11a Clients for 'Entire Network'



Contributors

- Alcatel
- Airespace
- Cisco Systems
- Juniper Networks
- Onvoy
- University of Minnesota
- Infoblox

Volunteers

- Jim Martin
- David Farmer
- Rob Nagy
- Terry Slattery
- George Perakis
- Dennis Fazio
- Dave Ahlstrand
- Karen O'Donoghue
- Dan Westacott
- Geoff Horne
- Jesse Lindeman
- Francois Bourdais
- Chris Liljenstolpe
- Frank Di Gravina
- Bill Jensen
- Chris Stradtman
- Ben Kochie
- Terry Yackel
- Rafael Rizo
- Jerry Wilson
- Steve Fletty