

Radios, SatCom and Considerations

Robert G. Cole

16 November 2011

MANET WG, IETF
Taipei

Introduction

- Two Models: Radio and SatCom
- Considerations and Capabilities
- Interfaces and Protocols

Subnet Model No1: SatCom

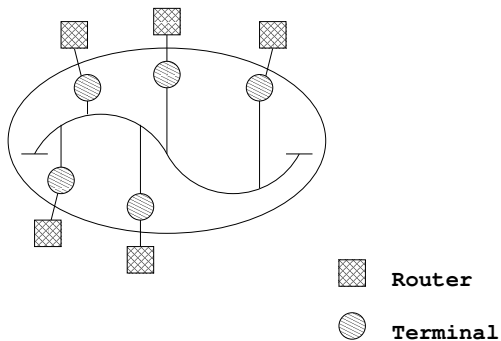


Figure: Model typical of SatCom subnets.

Subnet Model No2: Radio

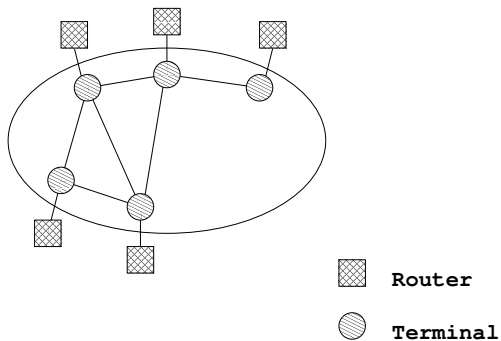
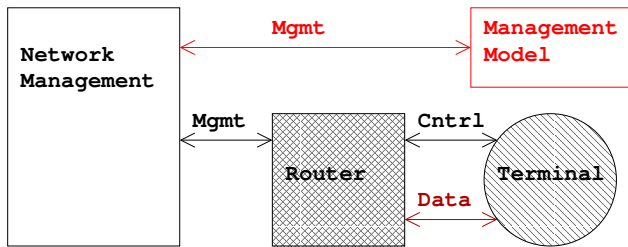


Figure: Model typical of Radio subnets.

Considerations and Capabilities

- Model – broadcast or non-broadcast multiple access (local scoped broadcast and pt-to-pt)
- Link Mgmt – up/down use semantics tied to model (what does link up mean?), flow control may depend on models
- Link Quality – dynamic or static, delay, BW, security, DSA
- Topology Control – numbers, locations (directional antennas), broadcast versus geo-locational information (for geographic based routing communication), what layer is responsible for routing?
- Precedence and Preemption – mapping to subnet capabilities
- Frame Formats – link level framing, MAC_IDs, P&P
- Control – DLEP
- Address Resolution – bound to subnet model or not

Interfaces



Interactions from perspective of the terminal

Figure: Interface and protocols.

Questions

Thanks !