

ForCES Interoperability test (Mid-February 2011 approx)

IETF – 79 Beijing

Kentaro Ogawa (ogawa.kentaro@lab.ntt.co.jp)
Weiming Wang (wmwang@mail.zjgsu.edu.cn)
Evangelos Haleplidis (ehalep@ece.upatras.gr)

Summary

- ◉ Location.
- ◉ Testing material.
- ◉ Scenario Overview.
- ◉ Network Configuration.
 - Local.
 - Distributed.
- ◉ Scenarios.
- ◉ Questions.
- ◉ Questions Summary.

Location

- Zhejiang Gongshang University
(tentative)



Testing material

- ◉ RFC 5810 (Protocol)
- ◉ RFC 5811 (SCTP-TML)
- ◉ RFC 5812 (Model)
- ◉ draft-ietf-forces-ceha-00
- ◉ draft-ietf-forces-lfb-lib-02

Scenarios Overview

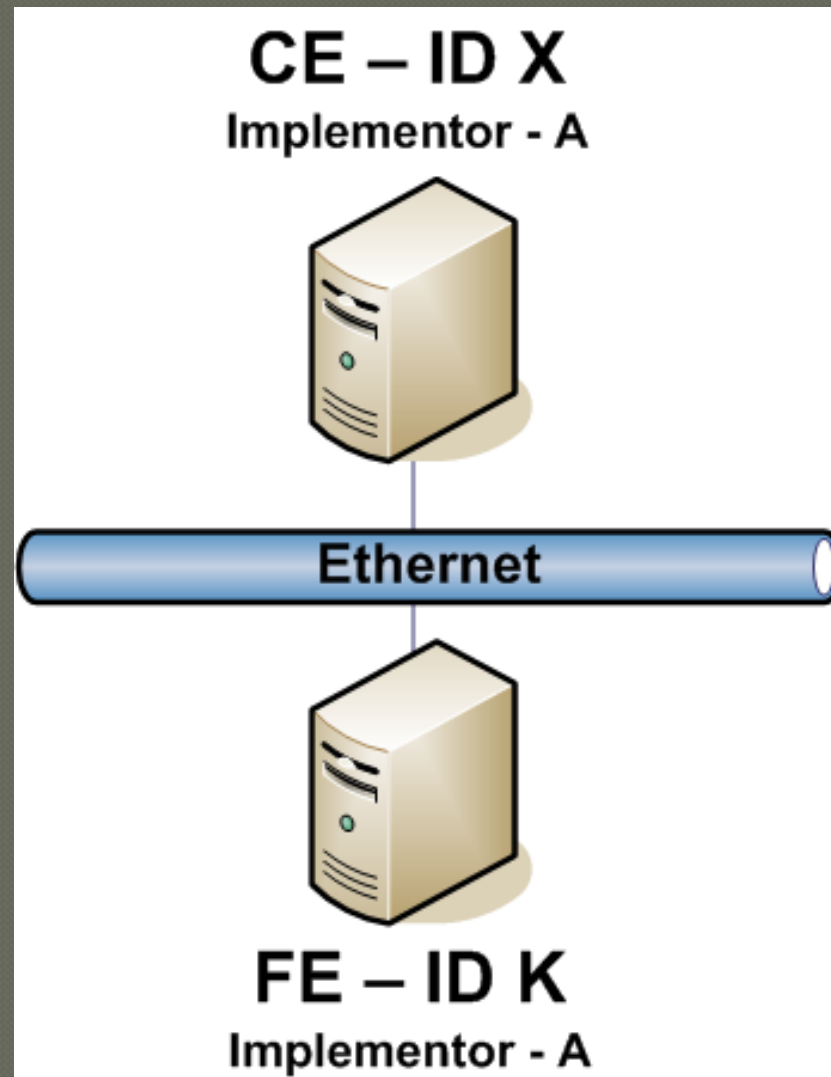
- The scenarios will cover more advanced ForCES functionality than previous interop.
- In some scenarios, NEs will be comprised of one CE and multiple FEs from different implementers and optional scenarios for CEHA implementations.
- All scenarios will be tested more than once with permutations of the CE(s) and FE(s) from different implementers.

Scenarios Overview

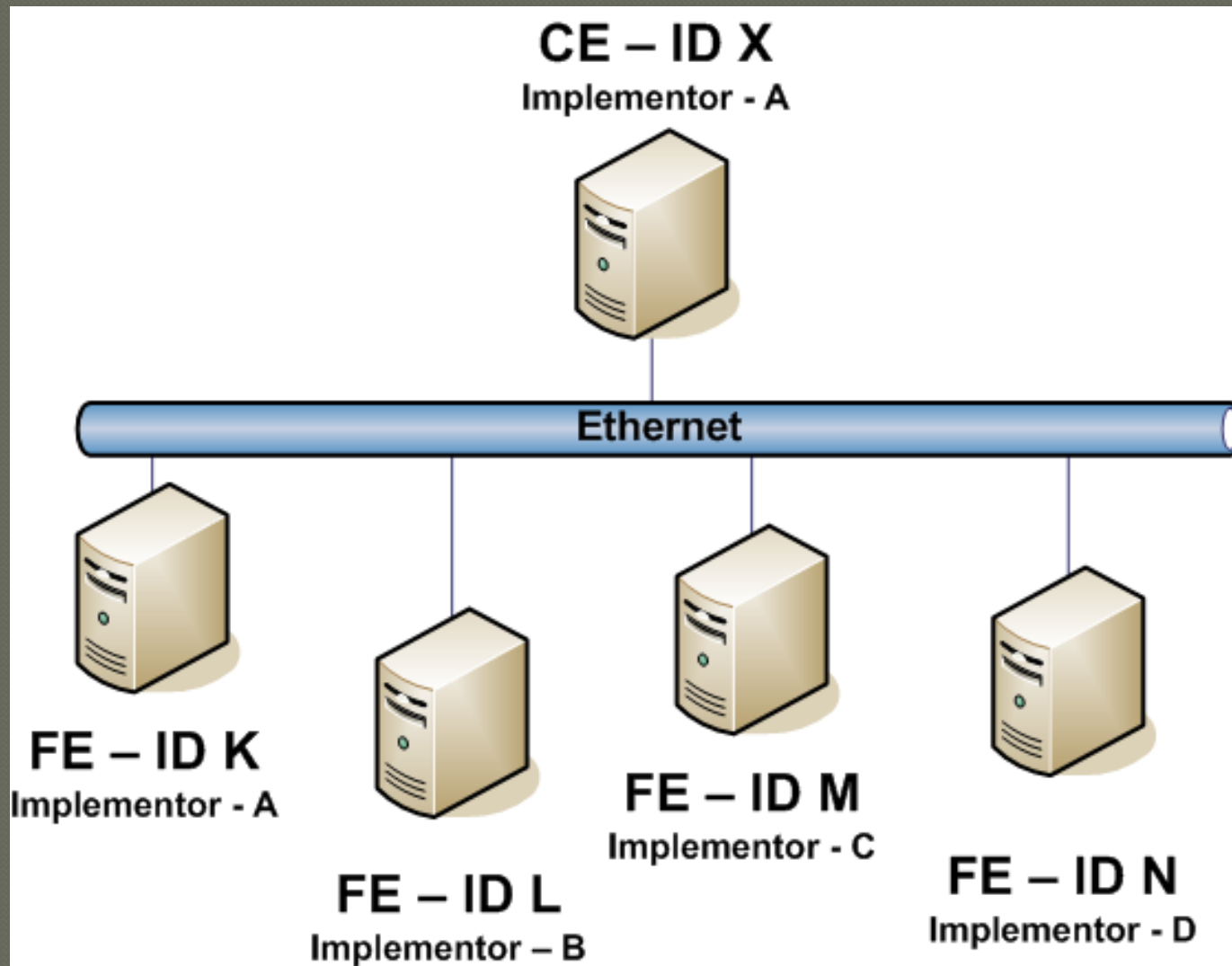
● Advanced ForCES Functionality:

- TML IPSec security.
- LFBs from LFB-lib document.
- DataPath Implementation (Optional?)
- CE High Availability (Optional?)

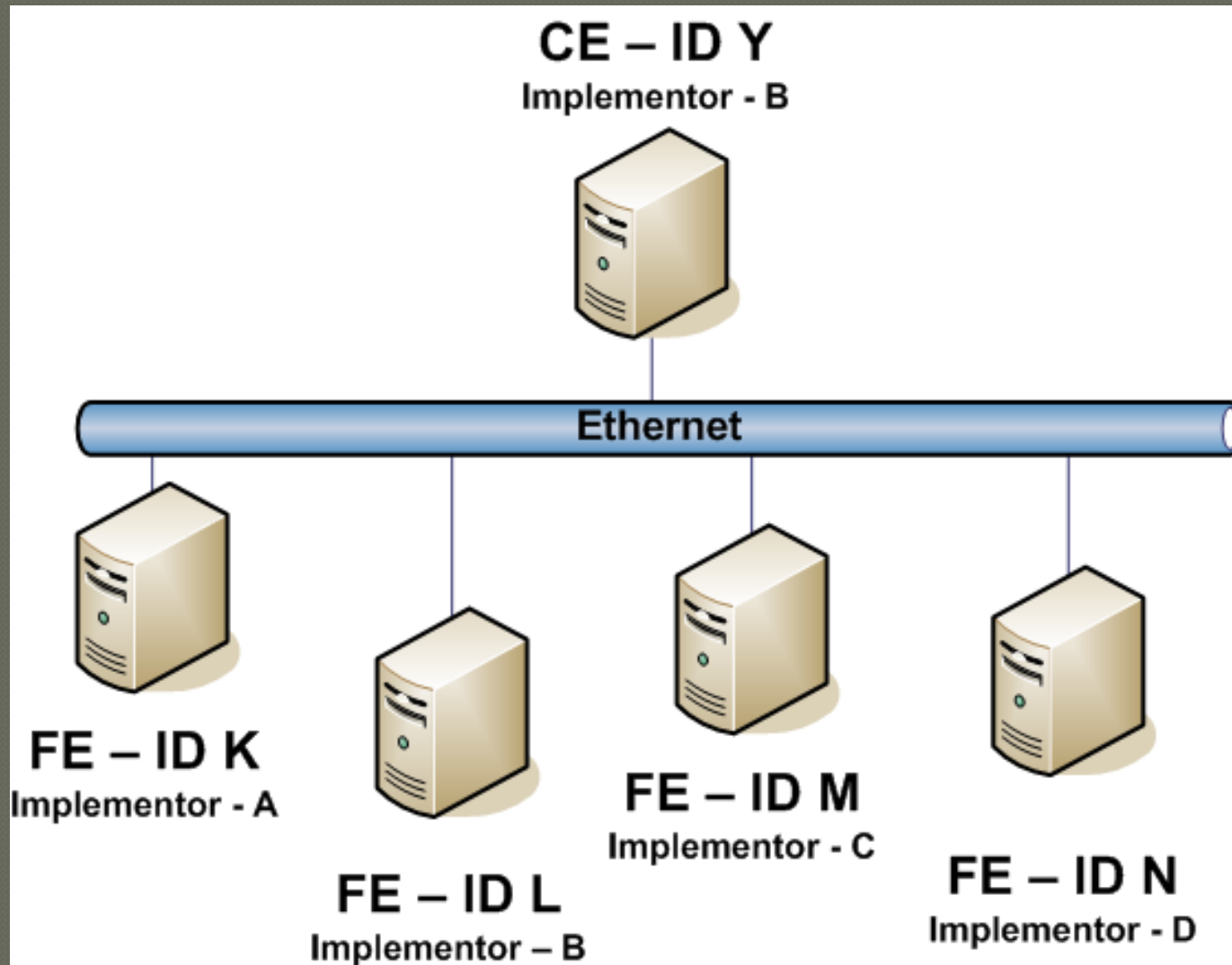
Local Configuration



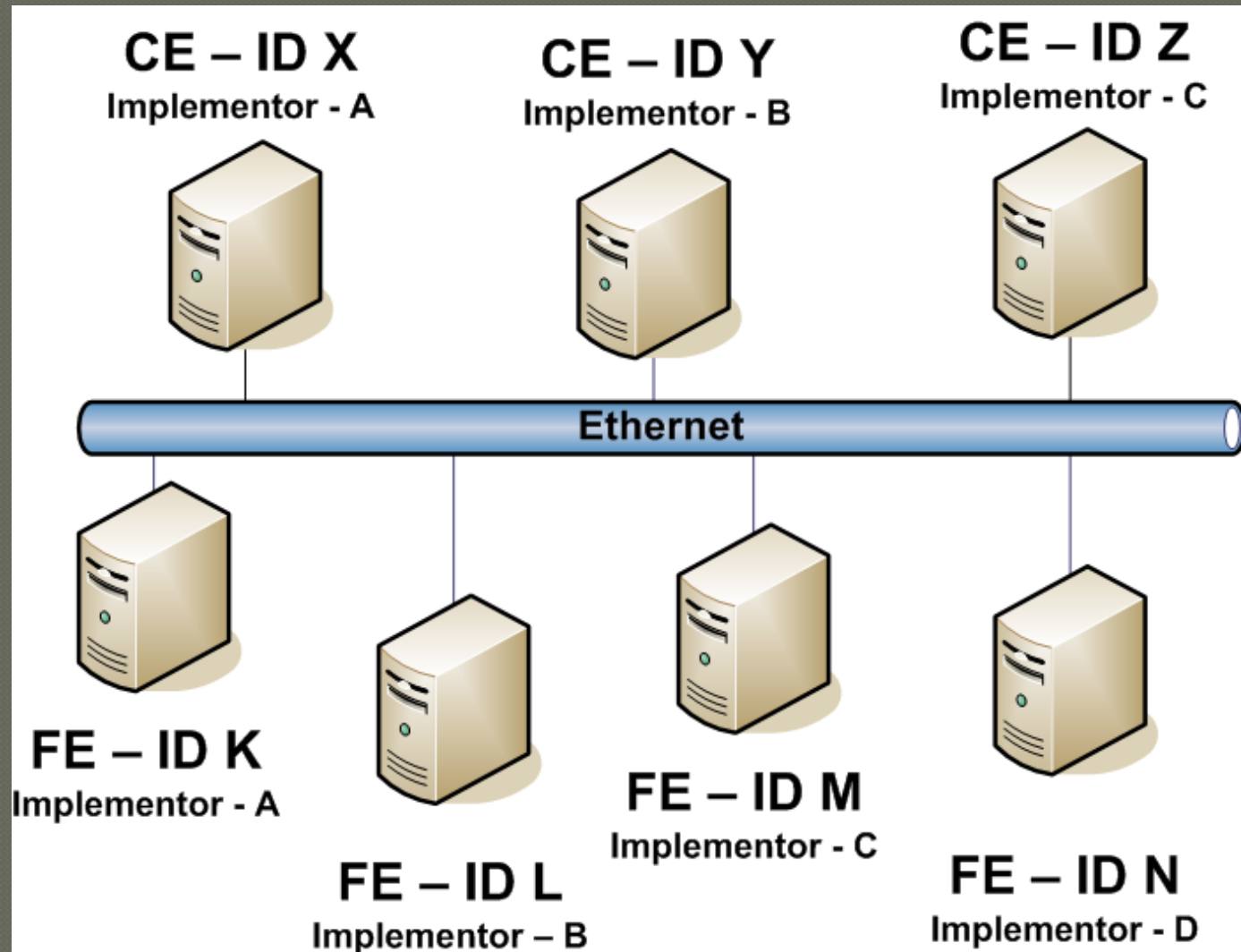
Local Configuration (cont.)



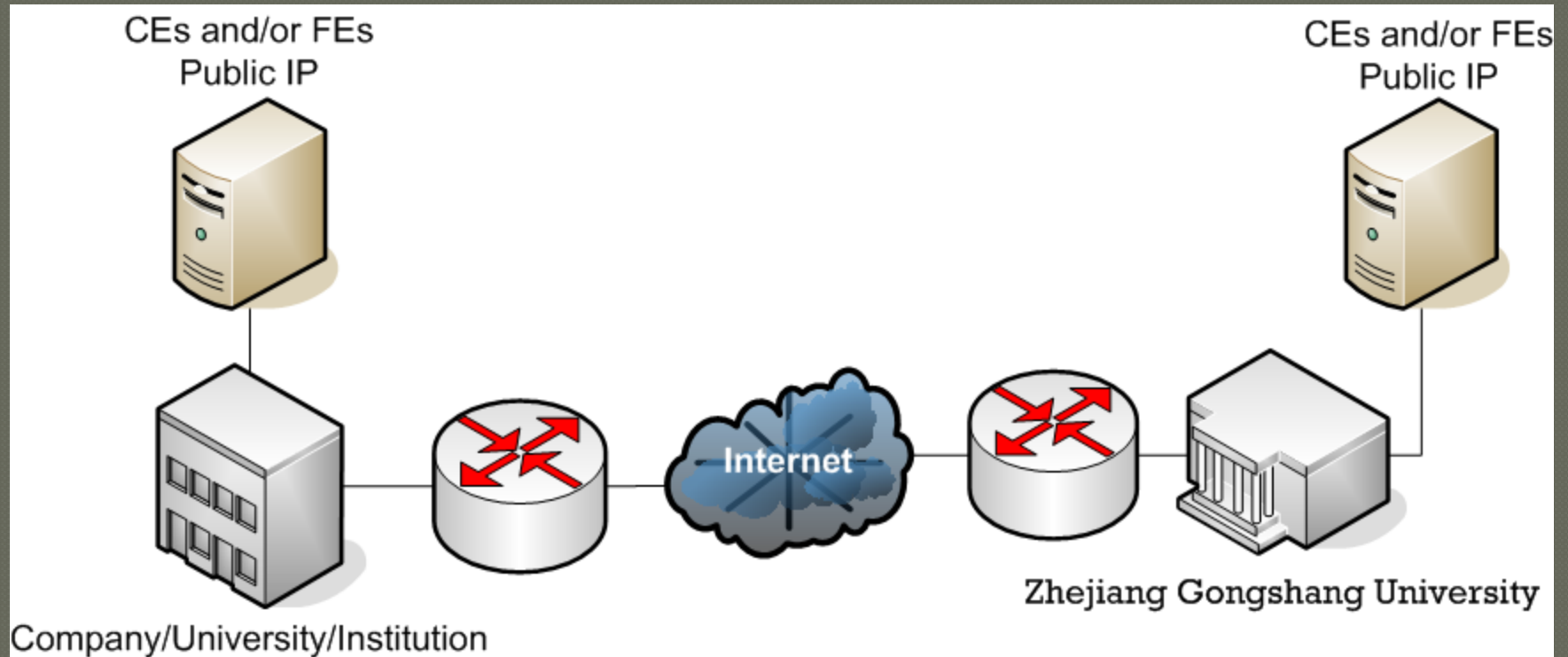
Local Configuration (cont.)



Local Configuration (cont.)



Distributed Configuration



Scenario 1 – The basic

- This scenario should assess the basic ForCES features, tested in Upatras interoperability including:
 - TML setup (with IPSec).
 - Association Setup.
 - Association Teardown.
 - Basic Query/Config.
- Should IPSec be mandatory?

Scenario 2 – LFB-lib Tests

- ◉ Config/Query LFBs from LFB-lib.
- ◉ Rotate different CE/FE implementations.
- ◉ Open Question: What parts of LFBlib should we test?

Scenario 3 – CEHA

- Part 1 - FEs with CEHA enabled should be associated with CEs from one implementer.
- Part 2 - FEs with CEHA enabled should be associated with CEs from different implementers.
- Test CEHA with master CE disconnected by:
 - Loss of connection.
 - Association Teardown.

Questions:

- ◉ How many local participants?
- ◉ Anybody interested in remote participation? (probably University of Patras)
- ◉ Specific dates for interoperability test?
- ◉ Special requirement?

Open Questions summary:

- ◉ DataPath Implementation (Optional?)
- ◉ CE High Availability (Optional?)
- ◉ Should IPSec be mandatory?
- ◉ What parts of LFBlib should we test?