

# ***Flow bindings in MIPv6 and NEMO***

***draft-ietf-mext-flow-binding-00***

***Hesham Soliman***

***Nicolas Montavont***

***Nicolaus Fikouras***

***Koojana Kuladinithi***

# Issues before WG LC

- Need to include support for default routes
- Clearly explain interactions with vanilla BU in RFC 3775
- Add more information about home link interactions as was done for MCoA draft
- Add applicability to DSMIPv6
- Decide whether the draft requires MCoA or not
- Several editorial comments and outdated parts of the draft need to be updated

# Support for Default bindings

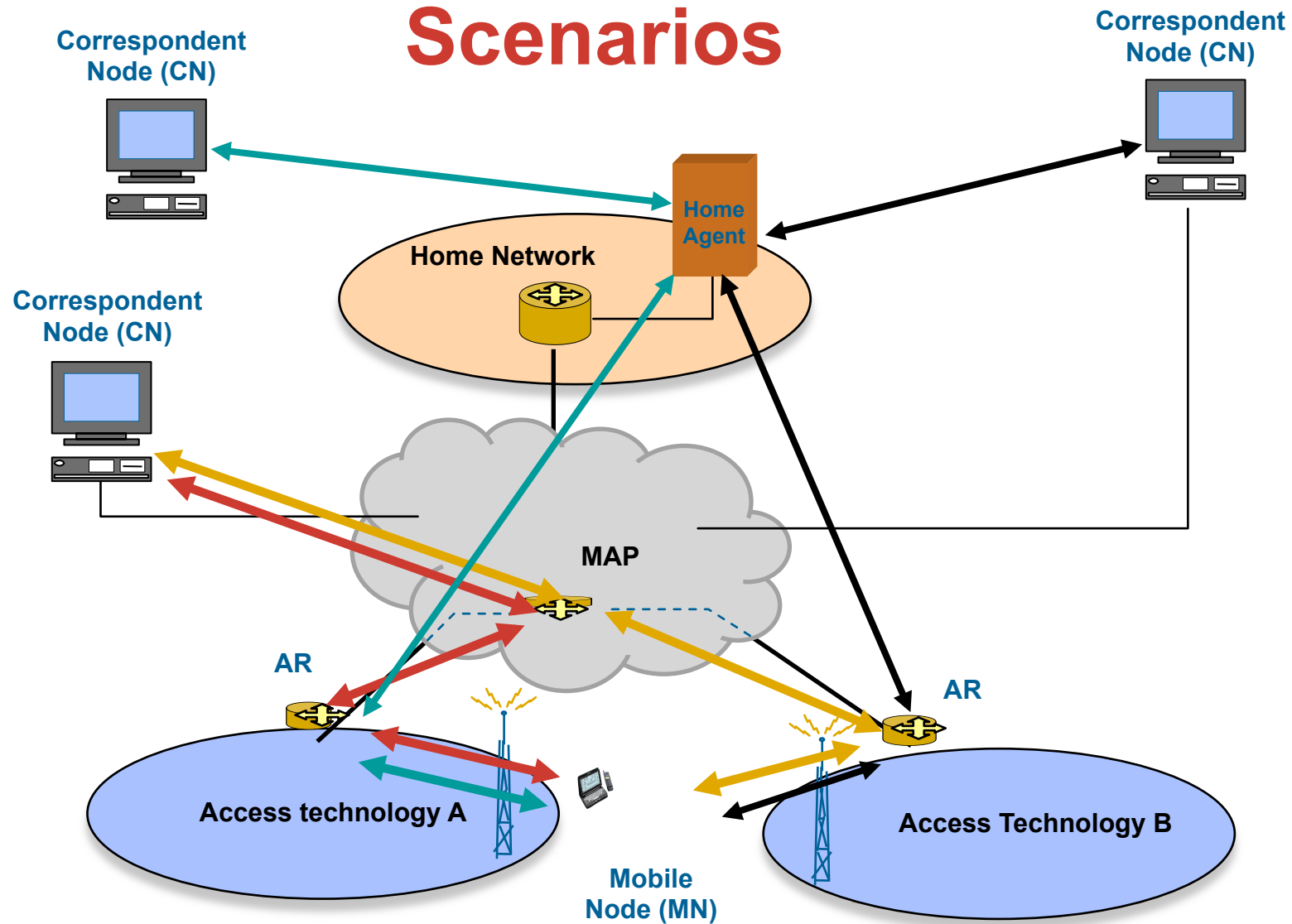
- Default bindings were included in MCoA but they were removed
- This draft needs to be able to define default bindings for flows that don't match any FIDs
- Can be done by inserting a default FID for each CoA
- This wild card FID would be either:
  - A requirement on the user of the flow bindings module, or,
  - Hidden from the user
- Comments?

# Reliance on MCoA

- The draft CAN use the MCoA draft for optimising multiple registrations or reducing signalling for addition/removal of FIDs
- The draft can also work independently of MCoA
- Do we need to make it a requirement that flow bindings uses MCoA? Reasons?



# Scenarios



# Scenarios

