

# Caching and Peer Selection in ALTO

**Reinaldo Penno**

[rpenno@juniper.net](mailto:rpenno@juniper.net)

**Stanislav Shalunov**

[shalunov@bittorrent.com](mailto:shalunov@bittorrent.com)

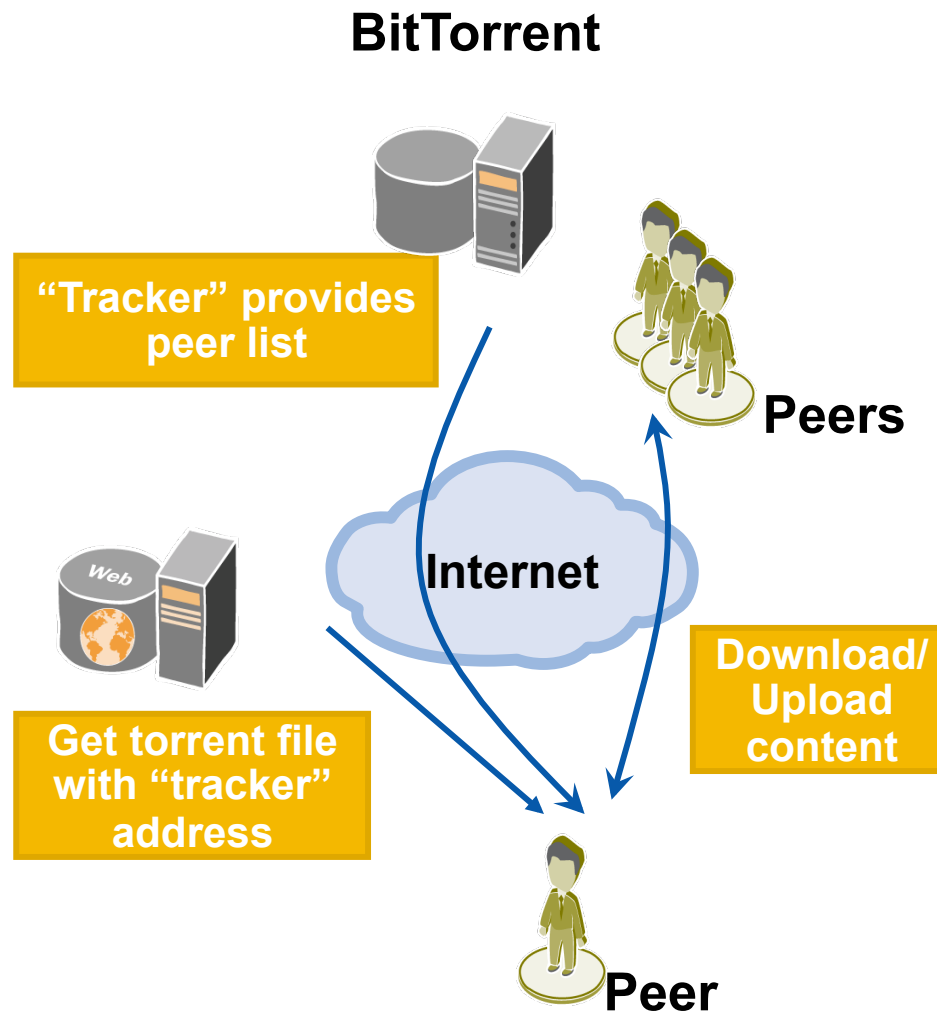
# Definitions

- **P2P Cache or Caching peer**
- **ALTO Server (or Local Tracker)**
- **P2P Cache Discovery**
- **ALTO Server Discovery**

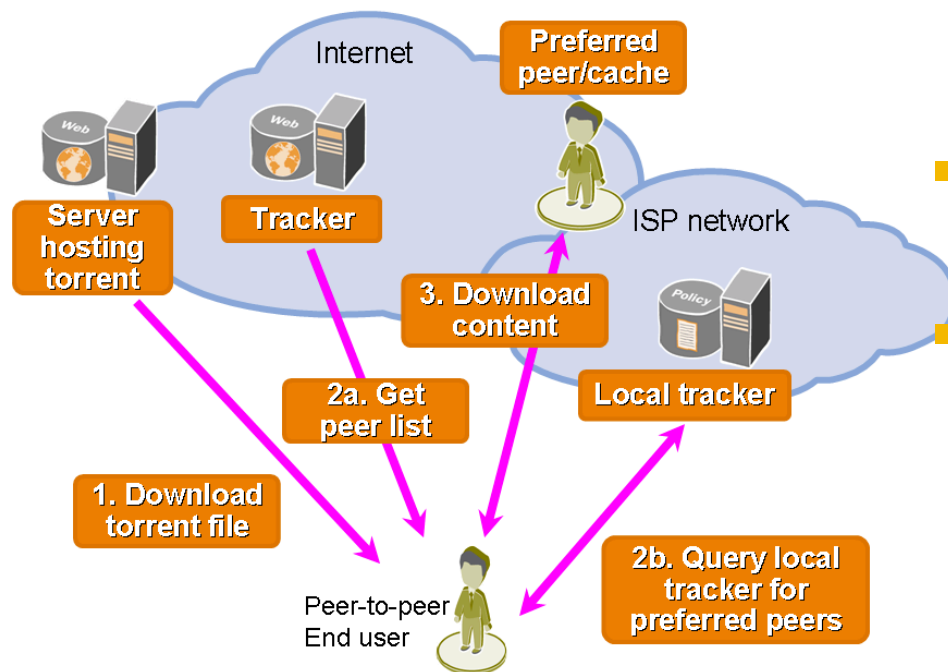
# Types of Discovery and Resources

- **Peers may bootstrap or discover caches and other resources through well known techniques (e.g., DNS SRV, DNS-SD, BEP-22, etc.)**
- **The ALTO server may be asked by the peers to discover caches using certain extensions to the ALTO protocol. These extensions could use the same techniques as the stand-alone solution (above).**
- **The same mechanisms can be used by the ALTO or other applications to discover other resources.**

# Bittorrent protocol overview

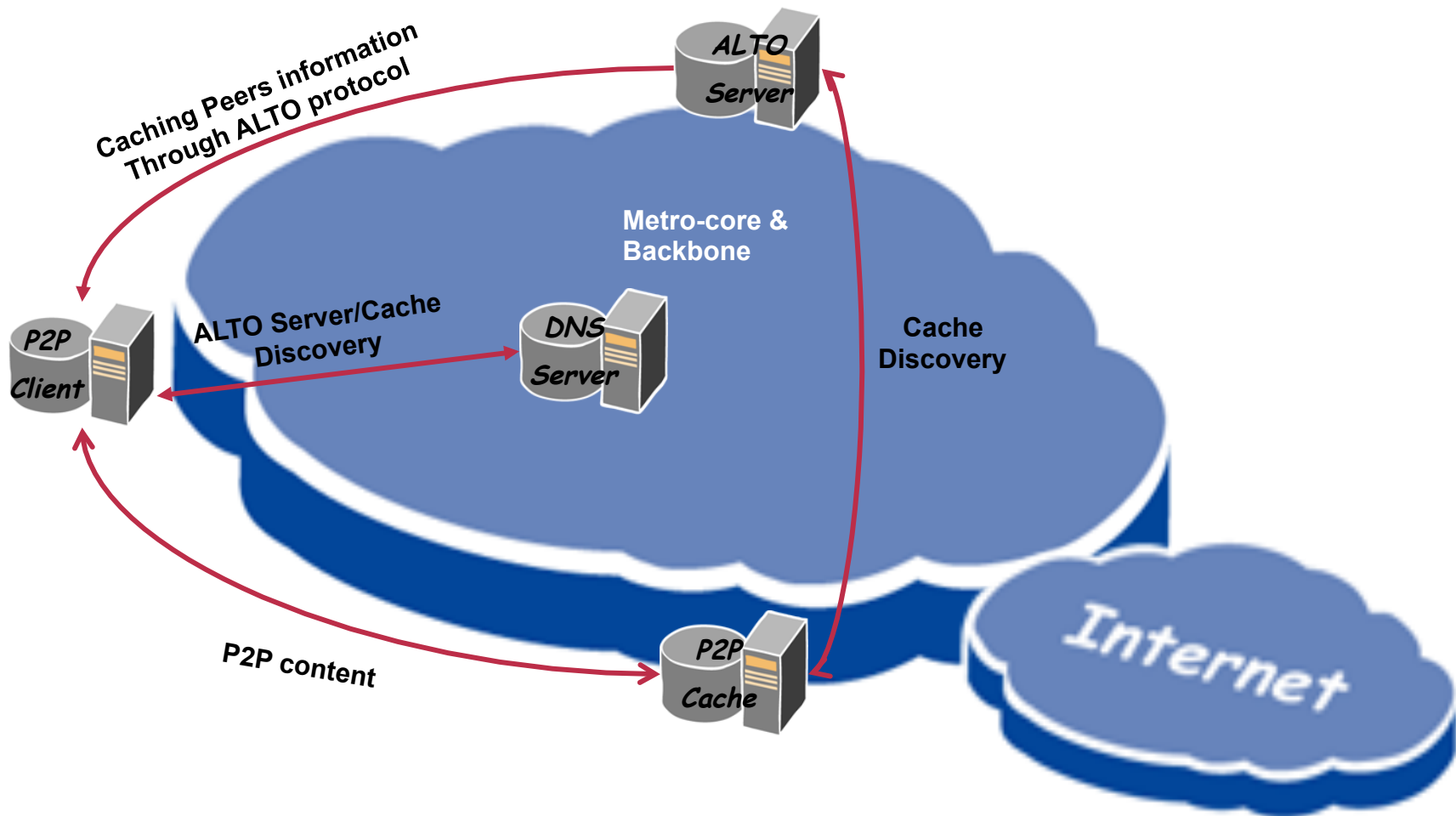


# BEP-22 Cache Discovery



- **Cache Discovery done by P2P clients without using ALTO protocol**
- **Discovery can be DNS based, for example.**
- **Discovery can be done through a Local Tracker, which would be similar to an ALTO Server**

# Caching and ALTO Server Discovery in ALTO Architecture



## Next Steps

- **Discovery document for ALTO Server and Caches**