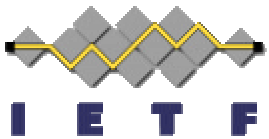


PANA and EAP

George Tsirtsis

g.tsirtsis@flarion.com

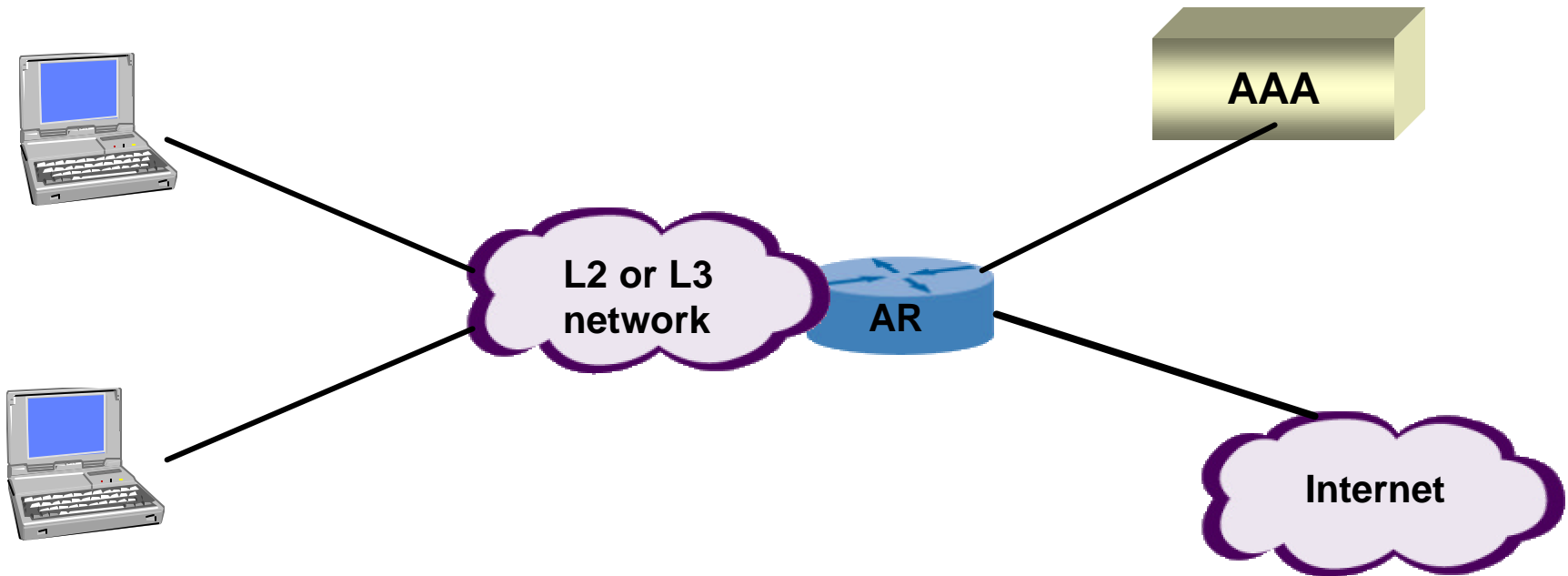
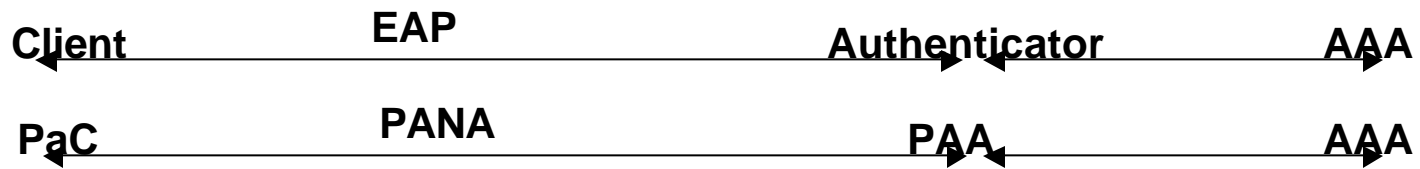


EAP vs. PANA or EAP over PANA?

- **EAP already supports most of the PANA requirements**
- **Ignoring EAP is to reinvent the wheel when someone is about to run you over with a track**

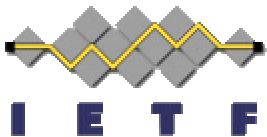


EAP and PANA topologies



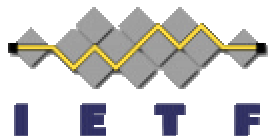
EAP Support of PANA Requirements

- Authentication → YES (extensible)
- Success/Failure Indication → YES
- May use AAA or not → YES
- PaC Identifier (NAI or other) → YES
- DI implicit/explicit → YES (implicit), explicit?
- Multi-access → YES (I guess...)
- Disconnect indication → NO (I think)
- PAA Discovery → NO
- Replay attack protection → YES (some methods)
- Interaction with other protocols → YES (I guess...)
- Local SAs → Work in Progress
- Reliability and Congestion Control → Kind of...



Work to be done

- **Define EAP Transport at the network layer**
 - IMO PANA's main objective
- **Define Explicit DI transport**
 - This links Authentication with the other 2 As of AAA
 - More discussion is needed in PANA and EAP
- **Disconnect Indication**
 - Discuss with EAP it also makes sense there
- **PAA Discovery**
 - Could be defined in PANA
- **Local SAs and Key distribution**
 - IMO an EAP issue, authentication and key distribution must be coupled
- **Reliability and Congestion Control**
 - More discussion is needed to see what makes sense where.





PANA ignoring EAP

PANA not ignoring EAP

